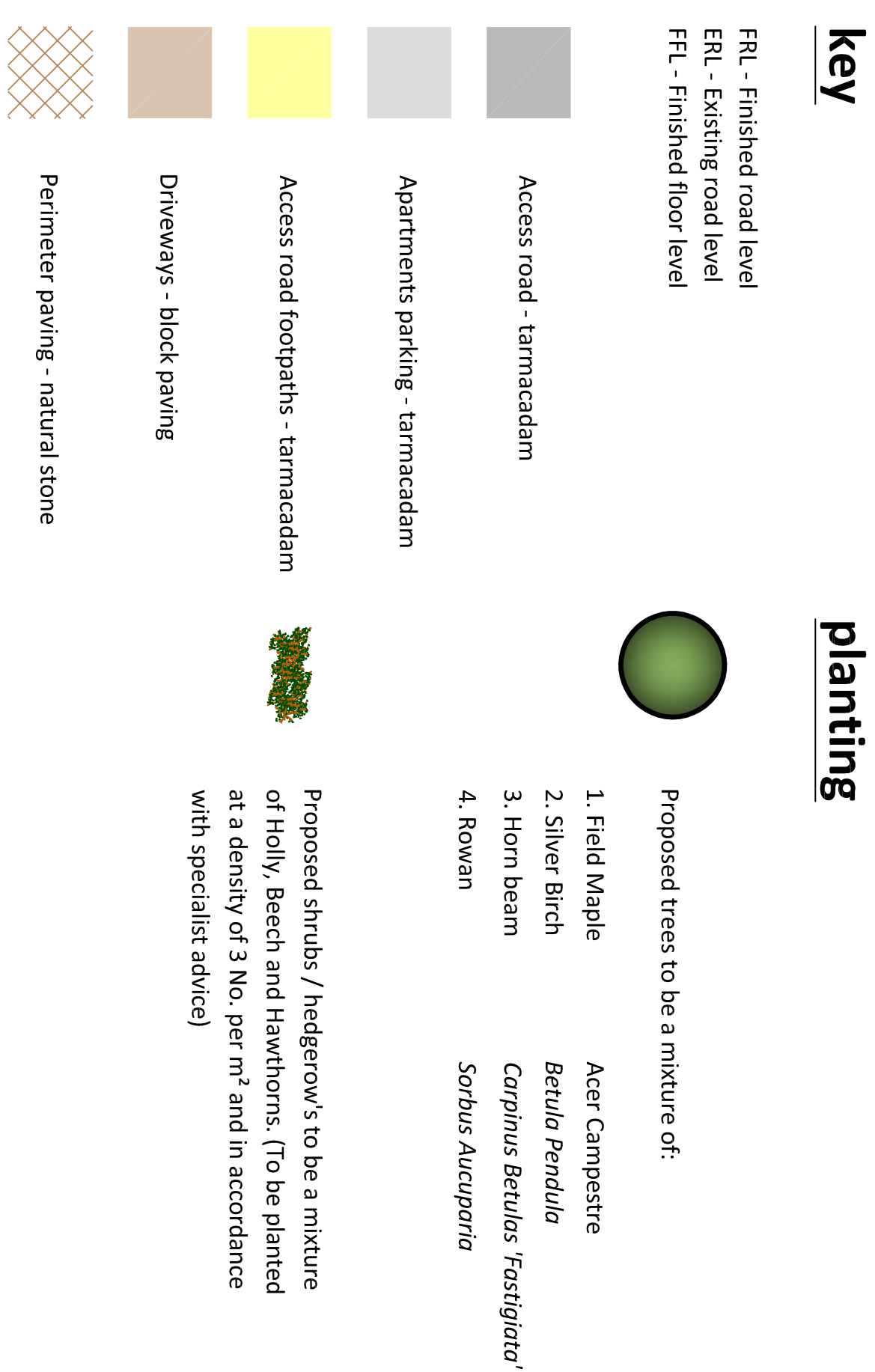
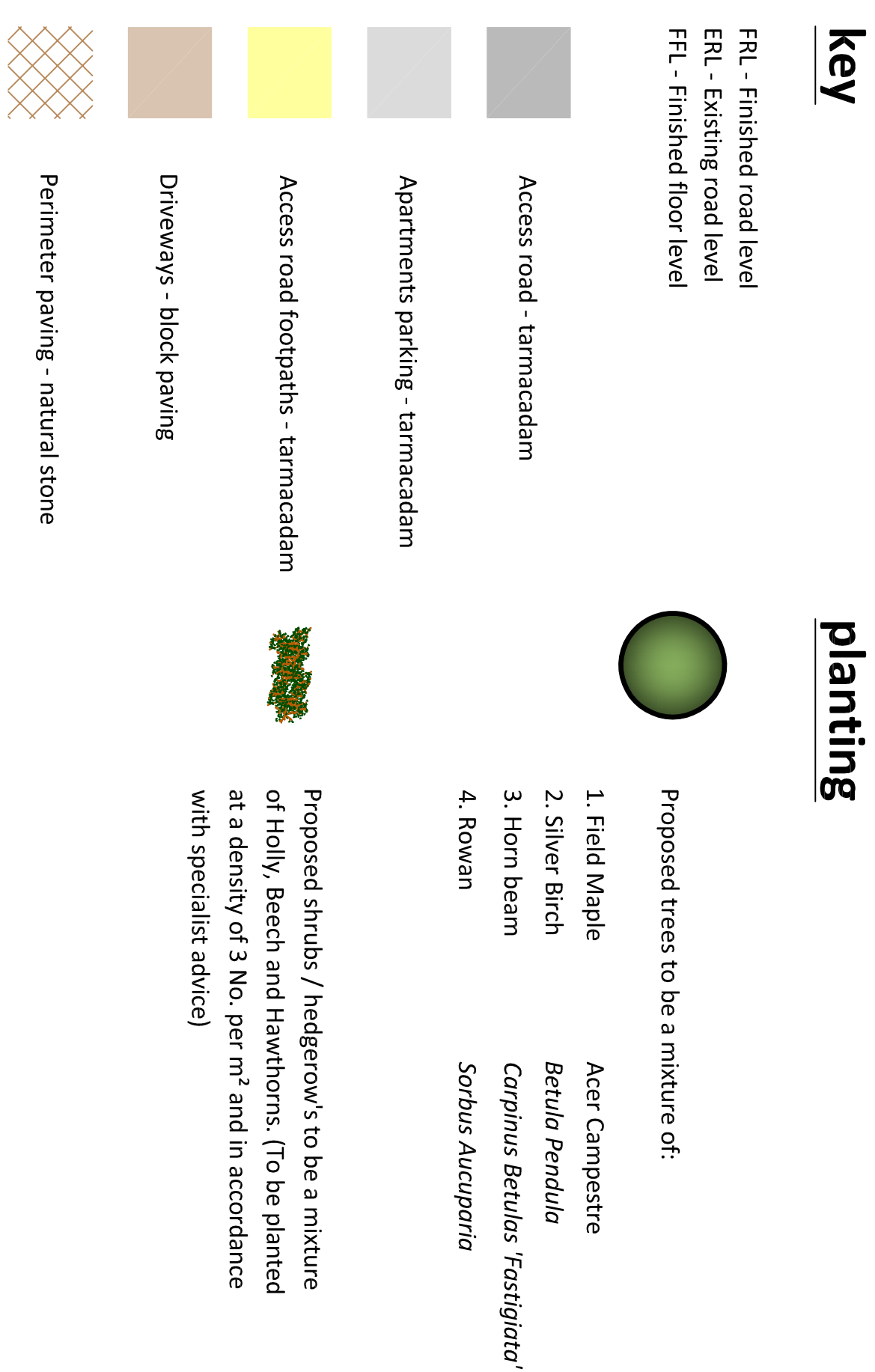
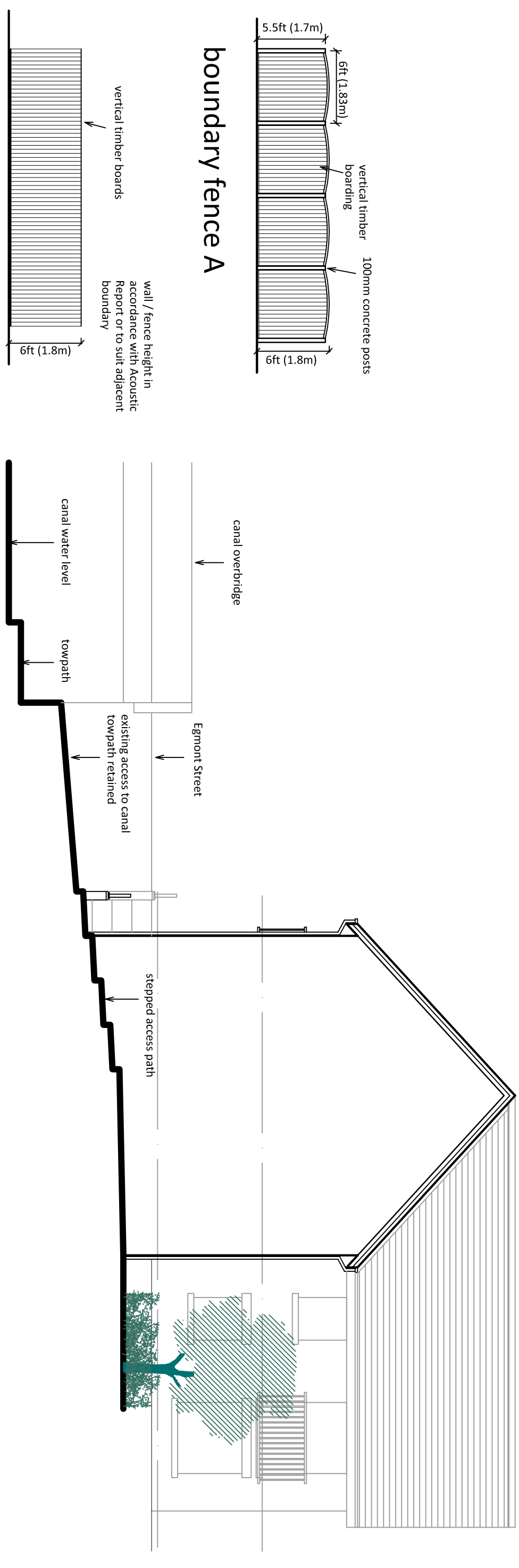


street scene facing canal

boundary type C  
coursed stone to match dwellings  
and black powder coated steel railings



Planning application boundary - contents edged red - 0.6 Acres or thereabouts

	N - Apartments elevation amended - 19/03/19
	M - Amendment to boundary adjacent Canal - 5/03/19
	L - Plot No. 1 handed, access path added and boundary type C amended - 27/03/19
	K - Parking spaces 5, 6 and 7 removed - 25/02/19
	J - Minor relocation of Pts 1, 2 and 3 - 14/02/19
	I - Parking spaces 8 and 9 removed - 24/01/19
	H - Relocation of parking spaces and alterations - 23/01/19
	G - Turning head relocated with access through 18/01/19
	F - Units split to semi detached and detached - 7/11/18
	E - Apartments and units 1-3 relocated - 4/10/18
	D - General Layout amendments - 15/4/18
	C - Dwelling repositioned and access alignment amended - 10/4/18
	B - Turning head highlighted - 07/2/18
Revision	
Client	
MCKAY HOMES LTD	
Project	
Land at Egmont Street, Mossley.	
PROPOSED SITE LAYOUT	
Chartered Surveyors & Estate Agents	
Established 1788 AS A REGISTERED FIRM Action-rental-type One 60Q	
Tel 0151 539 1009 F 0151 539 1002	
Enquiries Contact: T 0151 539 4800 F 0151 539 2060	
www.mccordingleys.co.uk	
Scale	
1 : 200 & 1 : 100	
@ A1	
Drawn by	SD
Checked by	June 2017
Date	